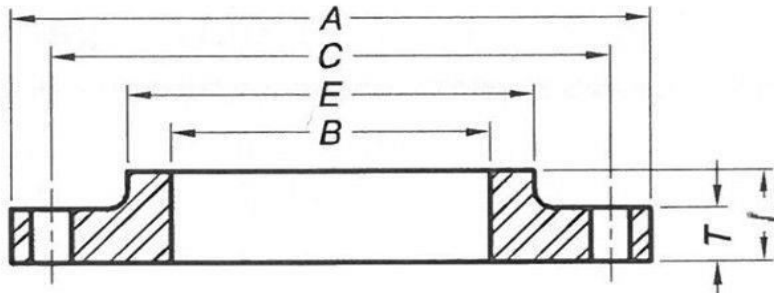


**TABLE 3 AWWA C207 CLASS D HUB FLANGES**



Nominal Pipe Size	O.D. Flange	Thick-ness	Overall Thickness	Diam. Of Hub	Bore	Drilling			Approx. Weight per Piece
						Diam. of Bolt Circle	Diam. of Bolt Holes	Number of Bolts	
NPS	A	T	L	E	B	C			LBS
4	9	0.5	0.875	5.312	4.57	7.5	0.75	8	7
5	10	0.562	1.25	6.312	5.66	8.5	0.875	8	9
6	11	0.562	1.25	7.562	6.72	9.5	0.875	8	11
8	13.5	0.562	1.25	9.688	8.72	11.75	0.875	8	15
10	16	0.688	1.25	12	10.88	14.25	1	12	22
12	19	0.688	1.25	14.375	12.88	17	1	12	33
14	21	0.75	1.25	15.75	14.19	18.75	1.125	12	43
16	23.5	0.75	1.25	18	16.19	21.25	1.125	16	52
18	25	0.75	1.25	19.875	18.19	22.75	1.25	16	52
20	27.5	0.75	1.25	22	20.19	25	1.25	20	61
22	29.5	1	1.75	24.25	22.19	27.25	1.375	20	92
24	32	1	1.75	26.125	24.19	29.5	1.375	20	105
26	34.25	1	1.75	28.5	26.19	31.75	1.375	24	119
28	36.5	1	1.75	30.5	28.19	34	1.375	28	130
30	38.75	1	1.75	32.5	30.19	36	1.375	28	144
32	41.75	1.125	1.75	34.75	32.19	38.5	1.625	28	182
34	43.75	1.125	1.75	36.75	34.19	40.5	1.625	32	191
36	46	1.125	1.75	38.75	36.19	42.75	1.625	32	207
38	48.75	1.125	1.75	40.75	38.19	45.25	1.625	32	237
40	50.75	1.125	1.75	43	40.19	47.25	1.625	36	249
42	53	1.25	1.75	45	42.19	49.5	1.625	36	287
44	55.25	1.25	2.25	47	44.19	51.75	1.625	40	334
46	57.25	1.25	2.25	49	46.19	53.75	1.625	40	348

48	59.5	1.375	2.5	51	48.19	56	1.625	44	407
50	61.75	1.375	2.5	53	50.19	58.25	1.875	44	421
52	64	1.375	2.5	55	52.19	60.5	1.875	44	448
54	66.25	1.375	2.5	57	54.19	62.75	1.875	44	475
60	73	1.5	2.75	63	60.19	69.25	1.875	52	605
66	80	1.5	2.75	69	66.19	76	1.875	52	718
72	86.5	1.5	2.75	75	72.19	82.5	1.875	60	803
78	93	1.75	3	81.25	78.19	89	2.125	64	1010
84	99.75	1.75	3	87.5	84.19	95.5	2.125	64	1160
90	106.5	2	3.25	93.75	90.19	102	2.438	68	1430
96	113.25	2	3.25	100	96.19	108.5	2.438	68	1618

**Notes:**

Hub flanges are to be used on pipe that has an OD equal to the nominal pipe size in the first column.

\*Pressure rating at atmospheric temperature: sizes 4-12 in. inclusive, 175 psi; sizes larger than 12 in., 150 psi. These flanges have the same OD and drilling as ANSI/ASME B16.1 class 125 cast-iron flanges. In sizes 24in. and smaller, they also match ANSI/ASME B16.5 150-psi standard for steel flanges.

Dimensions are in inches. Weights are in pounds.